



Green Infrastructure.....

Contributing to the economic prosperity and performance of the Haven Gateway

Judith Grice,
Regional Director,
Groundwork East of England



The Challenge.....

To manage change in such a way as to create places which are truly sustainable; places that

“delight the eye and refresh the spirit”

Green Infrastructure is going to play a key part in achieving this



And that is about

- Protecting what is special in the Haven Gateway
- Improving what is not so good
- Looking for new opportunities on the back of planned growth and development



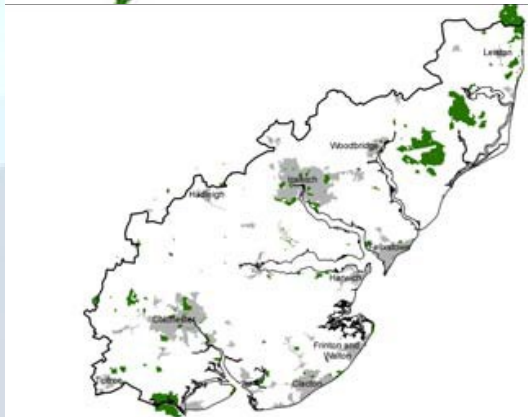
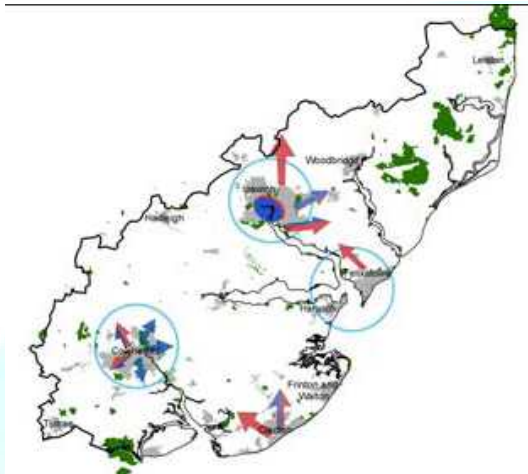
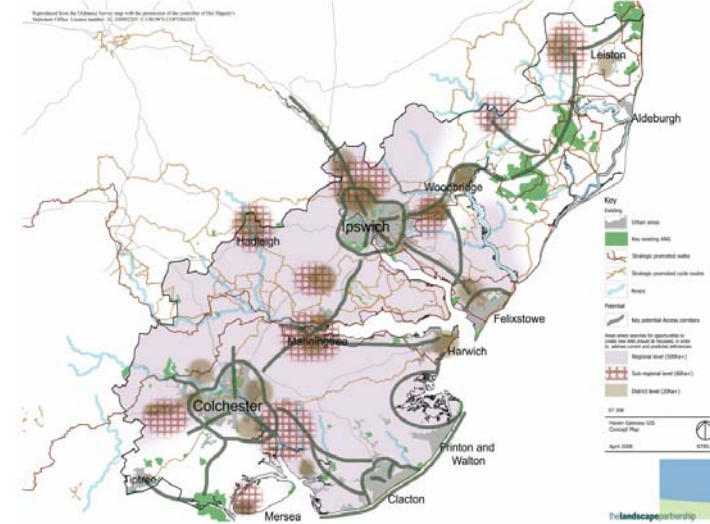


Haven Gateway Green Infrastructure Strategy (HaGGIS)

- Taking 'stock' and benchmark for action
- Taking a 'people' focus- how natural green spaces and activities can be accessed and used (ANGST)
- How green infrastructure can work as a network of spaces and corridors, linking existing and new development- adding value
- Partners bringing forward 160 projects for investment



thelandscapepartnership





Making the case for investment (1)

- Increasing land and property values
- Improving chances of inward investment and providing employment opportunities





Historical precedent.....

- More than just green space and access to it
- Employed skilled designers, artists, landscape architects and engineers
- Drew inspiration from past, culture and heritage
- Important lessons for us today!





Making the case for investment (2)

- Improving health and well-being, reducing costs to health service
- Reducing anti-social behaviour, crime and fear of





Making the case for investment (3)

- Addressing issues relating to climate change
 - Carbon reduction
 - Flood management





Making the case for investment (4)

- Tourism and Recreation
 - High quality landscape
 - Improved range of facilities and groups of activities
 - Increased visitors and spend, opportunities to manage those who visit
 - New 'green' businesses, driving up quality and environmental performance of others





Phase 1: 2009-11 (£898k)

- Ipswich 'River for All'
 - Foot/cycle paths, bridge, interpretation, warden
- Belstead Brook Park
 - Adjoining new housing, new paths, boardwalk, signs, conservation work, design study for volunteer training centre
- River Gipping Access Enhancements
 - Restoration of original line of Gipping Towing path, links to NCR51, circular route linking to 'River for All'
- Suffolk Sandlings Study
 - Management of Rendlesham and Tunstall Forests for visitors





Working in Partnership

- Other IDP programmes- how can they contribute?
 - thematic e.g. transport
 - spatial e.g. IPA East
- Existing partners, including Groundwork
- Scope for new partners
 - not just a green issue!
 - not just for public sector bodies
 - communities





Contact

- Steve Clarke, HG Interim Director
01206 848411
steve.clarke@haven-gateway.org
- Jonathan Rochford, Groundwork Project Manager
0787 116 7962
jonathan.rochford@groundwork.org.uk
- Peter Holborn, HaGGIS Steering Group Chairman
01473 264778
peter.holborn@et.suffolkcc.gov.uk